

TRULIANT TIBIAL NON-LOCKING IMPACTOR, LARGE

02-029-29-3100.

This Tibial Non-locking Impactor serves as an alternative tool for impacting tibial component into the tibia (*Figure 1*).



Figure 1

Assemble the Truliant Tibial Non-Locking Impactor to the Truliant Universal Modular Handle

TRULIANT SPIKED PATELLA PREP HANDLE

02-029-32-1100

Patella Preparation and Sizing

Assemble the appropriate size Truliant Drill Guide to the Truliant Spiked Patella Prep Handle (*Figure 2*). Refer to the Truliant Primary Operative Technique for remaining patella preparation and sizing.

Implantation of the Patella Component

Assemble the Truliant Patella Clamp Head to the Truliant Spiked Patella Prep Handle (*Figure 3*). Refer to the Truliant Primary Operative Technique for final implantation of the patella component.



Figure 2

Assemble the Desired Truliant Patella Drill Guide to the Truliant Spiked Patella Prep Handle



Figure 3

Assemble the Truliant Patella Clamp Head to the Truliant Spiked Patella Prep Handle and Clamp Patella Component Onto Bone

TRULIANT TOTAL KNEE SYSTEM | OPTIONAL INSTRUMENTS

TRULIANT TIBIAL RESECTION GUIDE (SM), 0°
02-029-21-8110 (left), 02-029-21-8120 (right)

Tibial Alignment and Resection

Refer to the Truliant Primary Operative Technique for assembly of the Truliant Extra-Medullary (EM) Tibial Alignment Guide. Assemble the Truliant Tibial Resection Guide (SM), 0° to the (EM) Upright (*Figures 4 and 5*).

Refer to the Truliant Primary Operative Technique for positioning of the EM Tibial Alignment guide, adjustment of posterior slope, and proximal tibial resection.

Figure 4
Assemble the Truliant Extra-Medullary Tibial Alignment Guide



Figure 5
Truliant Tibial Resection Guide (SM), 0°

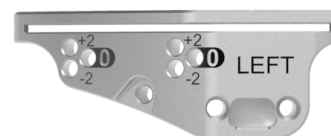
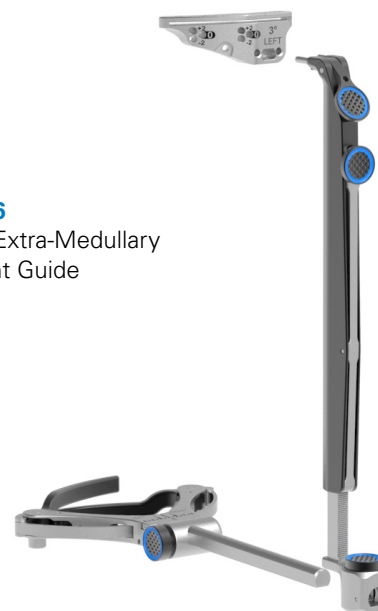


Figure 6
Assemble the Truliant Extra-Medullary Tibial Alignment Guide



TRULIANT TIBIAL RESECTION GUIDE (SM), 3°
02-029-21-8310 (left), 02-029-21-8320 (right)

Tibial Alignment and Resection

Refer to the Truliant Primary Operative Technique for assembly of the Truliant Extra-Medullary (EM) Tibial Alignment Guide. Assemble the Truliant Tibial Resection Guide (SM), 3° to the (EM) Upright (*Figures 6 and 7*).

Figure 7
Truliant Tibial Resection Guide (SM), 3°



TRULIANT TOTAL KNEE SYSTEM | OPTIONAL INSTRUMENTS

Refer to the Truliant Primary Operative Technique for positioning of the EM Tibial Alignment Guide. To achieve three degrees posterior slope on the proximal tibia, the Tibial Resection Guide should be positioned parallel to the shaft of the tibia (no slope) since the Resection Guide has three degrees slope built into it (*Figure 8*).

Refer to the Truliant Primary Operative Technique for resection of the proximal tibia.



Figure 8
Adjust Tibial Posterior Slope to Neutral Position

TRULIANT 2° VARUS/VALGUS RE-CUT REFERENCER 02-029-90-8123

The Truliant 2° Varus/Valgus Re-Cut Referencer will reposition the Tibial Resection Guide two degrees from the existing proximal tibial resection. Depending on the orientation of the referencer, the Tibial Resection Guide will be positioned two degrees varus or two degrees valgus from the existing resection (*Figure 9*).

Assemble the 2° Varus/Valgus Re-Cut Referencer to the Tibial Resection Guide (*Figure 10*).



Figure 9
Truliant 2° Varus/Valgus Re-Cut Referencer



Figure 10
Assembly of the Truliant 2° Varus/Valgus Re-Cut Referencer to the Truliant Tibial Resection Guide

TRULIANT TOTAL KNEE SYSTEM | OPTIONAL INSTRUMENTS



Figure 11
Placement of 2° Varus/Valgus Re-Cut Referencer Assembly on the Proximal Tibia

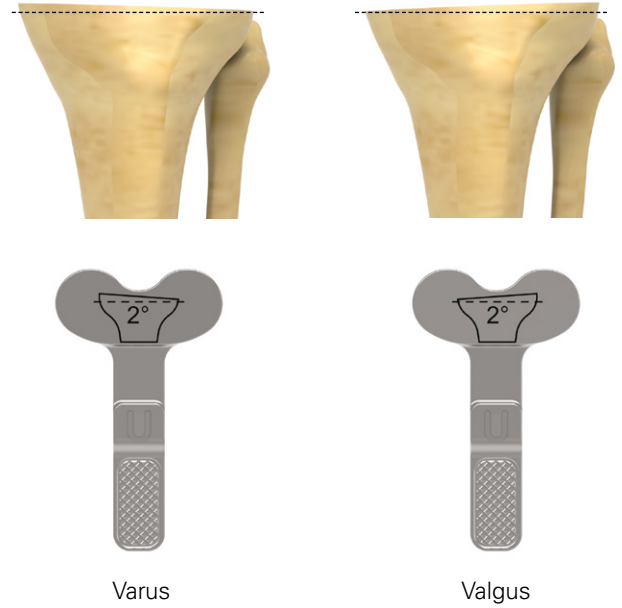


Figure 12a
Orientation of Varus/Valgus Re-Cut Referencer for a Left Knee

Place the 2° Varus/Valgus Re-Cut Referencer assembly on the cut surface of the proximal tibia in the correct orientation to achieve the desired tibial resection (*Figures 11, 12a and 12b*). Pin the Tibial Resection Guide in place using the zero holes and proceed to make the proximal tibial resection.

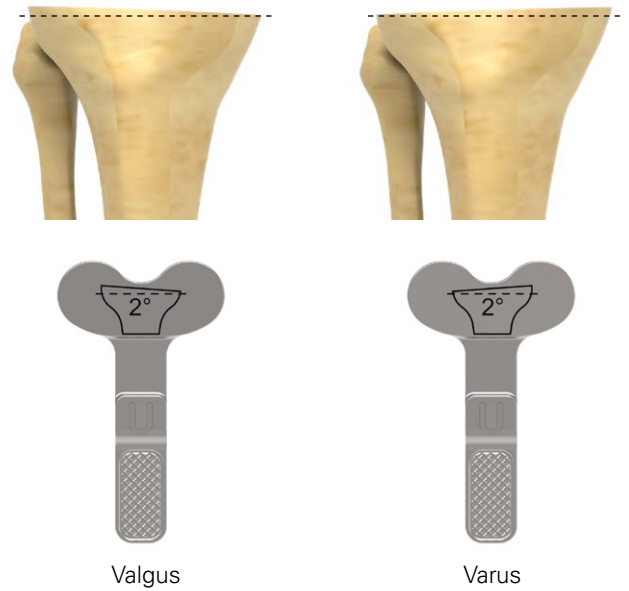


Figure 12b
Orientation of Varus/Valgus Re-Cut Referencer for a Right Knee

TRULIANT TOTAL KNEE SYSTEM | OPTIONAL INSTRUMENTS

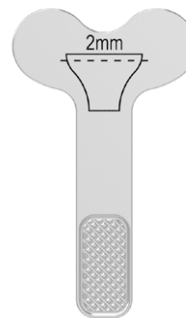


Figure 13

Truliant 2mm Re-Cut Referencer

TRULIANT 2mm RE-CUT REFERENCER

02-029-90-8002

After completion of the proximal tibial resection, the Truliant 2mm Re-Cut Referencer (*Figure 13*) can be used to resect an additional 2mm of bone.

Assemble the 2mm Re-Cut Referencer to the Truliant Tibial Resection Guide (*Figure 14*). Place the 2mm Re-Cut Referencer assembly on the cut surface of the proximal tibia in the correct orientation to achieve the desired tibial resection (*Figure 15*). Pin the Tibial Resection Guide in place using the zero holes and proceed to make the proximal tibial resection.



Figure 14

Assemble the Truliant 2mm Re-Cut Referencer to the Truliant Tibial Resection Guide



Figure 15

Placement of 2mm Re-Cut Referencer Assembly on the Proximal Tibia

RBK TIBIAL IMPACTOR*

02-029-29-3400

Follow the surgical steps of the Optetrak Logic RBK Operative Technique. When the tibial impactor is needed, assemble the Truliant RBK Tibial Impactor with the Truliant Universal Modular Handle (*Figure 16*), and perform the impaction step.

**Not available in the US.*



Figure 16

Assemble the Truliant RBK Tibial Impactor to the Truliant Universal Modular Handle